

# Hampshire Water Transfer and Water Recycling Project Environmental Statement - Figure 12.5 Location of allocated site west of Waterlooville Winchester

**VOLUME NUMBER: 6**

**PLANNING INSPECTORATE SCHEME NUMBER: WA010002**

**APPLICATION DOCUMENT REFERENCE: 6.3**

**APFP REGULATION: 5(2)(a)**

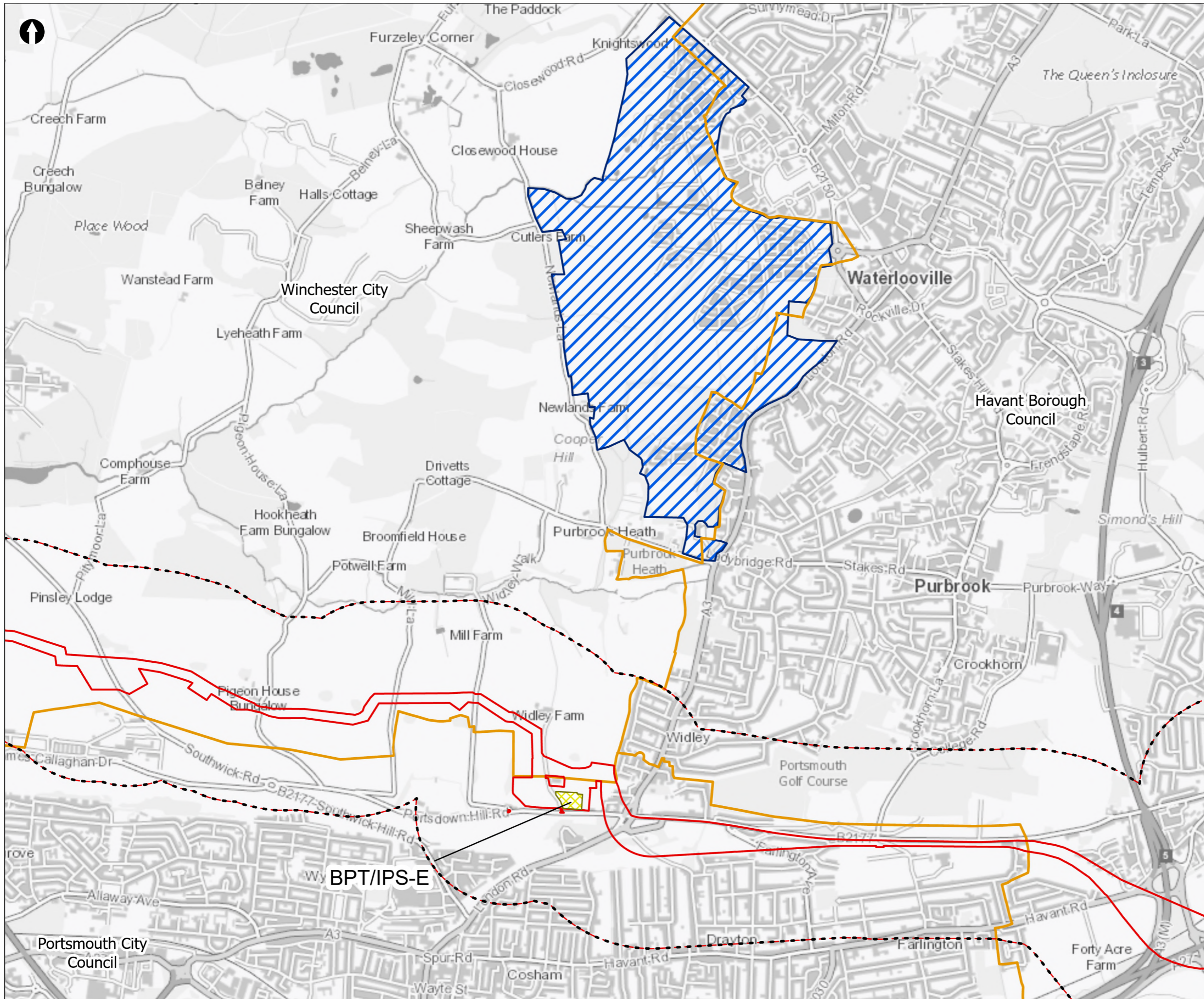
May 2026

Version 0



from  
**Southern  
Water** 





- Order Limits
- Land use and agriculture study area (500m buffer)
- Local planning authorities
- Local Plan Sites Emerging
- Local Plan Sites Adopted - Waterlooville
- Above Ground Plant**
- Break Pressure Tank & Intermediate Pumping Station

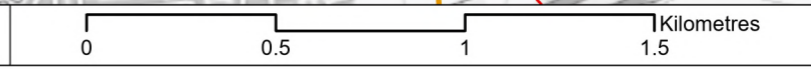
Coordinate system: British National Grid; Datum: OSGB 1936  
 Data sources: © Crown copyright and database rights 2026 Ordnance Survey 0100031673. Contains OS data © Crown Copyright and database right 2020. Sources: Esri, TomTom, Garmin, FAO, NOAA, USGS, © OpenStreetMap contributors, and the GIS User Community

PROJECT TITLE  
 Hampshire Water Transfer and Water Recycling Project



Figure 12.5  
 Location of allocated site west of Waterlooville, Winchester

Drawn DL	GIS Checked MW	Checked MP	Approved AK
Scale at A3 1:20,000	Status Final	Revision 05	Security STD



Drawing Number  
 PC5223-RHD-ES-ZZ-D-Z-0125